

Vol. 11, No. 2 February 2010

North Dakota Simmental Scene

Official Publication of the North Dakota Simmental Association

PRESORTED
FIRST CLASS
U.S. Postage
PAID
Permit No. 580
Manhattan, KS

North Dakota Simmental Association
6050 Old Highway 2
Berthold, ND 58718



LaBatte Simmentals

Friday • March 5, 2010 • 1:00 pm

Sale Offering: 80 Beef Bulls • Reds • Blacks • Fullbloods

Catalog online at www.transconlivestock.com

LaBatte Simmentals invite our American neighbors to our 30th Annual Sale.

“Where Cattlemen Come for Herdbulls”

- Our breeding program emphasizes calving ease, thickness, depth, polled, performance, hair coats and testicular size.

- All our top bulls sell, featuring many generations of polled, red and black genetics plus fullblood Fleckvieh genetics. Bulls will be semen tested.

- Free delivery, with paperwork in order.

- Sight unseen purchase program available, call Barry to discuss your needs at 306-969-4820 or cell 406-765-8820.

- Sale at Moose Jaw, Sask approximately 2 hours from Plenywood, MT or 2 hours from Estevan, Sask.

- Sale day phones call Barry LaBatte at 406-765-8820 or Auction Mart at 306-693-4715

Sale Consultants:

Transcon Livestock 403-556-5563
 Bouchard Livestock 403-813-7999
 Wilf Davis Livestock 204-834-2479



IPU 102W • Red Polled Purebred
 TNT Accelerator x Red Quorum



IPU 74W • Red Polled Purebred
 Turbo Charged x Red Teddy



IPU 128W • Fullblood Full Fleckvieh
 Laredo x Houston



IPU 17W • Black Polled Purebred
 KBR Exciter X Red Chief



IPU 28W • Red Polled Purebred
 TNT Mercedes x Big Sky



IPU 182W • Red Baldy Polled Purebred
 TNT Accelerator x Ribeye



IPU 192W • Fullblood
 Laredo x Houston



IPU 173W • Black Polled Purebred
 Resistol x Choice Plus

Barry & Brenda LaBatte

PO Box 72 • Gladmar, Sask. SOC 1AO
 306-969-4820 or 406-765-8820, cell
 e-mail: labatte.simm@sasktel.net

We are located only 25 miles North of Plenywood, Montana or 70 miles West of Estevan, Sask.

Vistors Always Welcome.

Clip and Mail for Catalog.

Name _____
 Address _____
 Zip Code _____
 Phone Number _____

Request Video Yes No

Mail to: LaBatte Simmentals
 PO Box 72 • Gladmar, Sask. • Canada • SOC 1AO

North Dakota Simmental Association
Board of Directors

Pat Thorson, President

16644 51st Street SE
Kindred, ND 58051
701-371-8230

Greg Myers

12066 57th Street SE
Kathryn, ND 58049
701-924-8224

Erika Kenner, Vice President

5606 57th Street NE
Leeds, ND 58346
406-581-1188

Robert Gannaway

14246 A 56th Street NW
Williston, ND 58801
701-875-6267

Bob Grant, Secretary/Treasurer

6050 Old Highway 2
Berthold, ND 58718
701-453-3218

Luke Keller

1573 County Road 136
Mandan, ND 58554
701-445-7350

Mike Johnson

2262 44th Street
McCanna, ND 58251
701-397-5724

Doug Bichler

130 83rd Street SE
Linton, ND 58552
701-254-4306

JR Aufforth

6647 98th Street NW
Bowbells, ND 58721
701-377-2870

Kevin Elliot

14690 2nd Street SE
Clifford, ND 58016
701-488-2712

Editor's Message...

Greetings!

Bull sale season is upon us! By the time you read this, there will be a few sales completed and hopefully a great start to a long sale season. Good luck to all those producers in their upcoming events.

There will be over 4000 copies of this issue of the ND Scene distributed over the upper Midwest and Canada. We are trying something a little new with this issue. We are going to try to connect the printed version of the Scene with the online version at www.northdakotasimmental.com. There will be some editorial content posted on the website that we did not have room for in this issue. I encourage you to view a very interesting article on Cattle Ranch Partnerships by Cari Rincker of Rincker Law, PLLC.

This is the 12th issue of the ND Scene produced by EDJE Technologies. I would like to thank Jonina, Erin, Connie, Shari and all the others at EDJE for making the ND Scene a top notch publication!

*Sincerely,
Todd Finke*

North Dakota
Simmental Scene

A publication of the North Dakota Simmental Association

Todd Finke, Sales
35500 114th Avenue NW
Berthold, ND 58718
701-240-7711
todd@edje.com

The following terms and conditions have been agreed on by the North Dakota Simmental Association Board of Directors and the North Dakota Simmental Scene Committee.

Advertising Space Rates

Size	BW	4C
Full Page	\$400	\$550
½ Page	\$300	\$410
¼ Page	\$200	NA
Business Card	\$150 (per year)	

Advertising Deadlines

Issue	Deadline
November	November 1st
January	December 20th
February	January 20th

Terms

All advertising accounts are due and payable as invoiced. Interest charges of 1% per month will be assessed to accounts that are 30 days past due.

Delinquent Advertiser's Account

Advertisers knowingly and expressly agree and consent that, whenever accounts receivable for an advertiser have not been paid as of 90 days from date involved, advertising privileges will be suspended until full payment has been received.

Copy Changes

Alterations in advertising copy, if requested after closing dates will be permitted only if time allows.

The North Dakota Simmental Association and the North Dakota Simmental Scene reserve the right to refuse any advertising copy at our sole discretion. The North Dakota Simmental Association and the North Dakota Simmental Scene assume no responsibility for the accuracy of the advertising content submitted. Advertisers assume all responsibility for the accuracy and truthfulness of submitted advertising containing pedigrees or statements regarding performance.

Editorial Content

Opinions expressed are those of the writer and not necessarily those of the North Dakota Simmental Association or the North Dakota Simmental Scene. Photographs and manuscripts are welcome, but no responsibility is assumed either while in transit or while in this office.

Produced by EDJE Technologies

Calendar of Events

February 2010

- 2 James Creek Simmentals Private Treaty Bull Sale
Heaton, ND
- 2 Koepplin Black Simmentals Bull Sale
Mandan, ND
- 3 Begger's Diamond V Ranch Production Sale
Wibaux, MT
- 5 4E Simmentals' Uppin' the Ante Bull & Female Sale
Bismarck, ND
- 6 Klain Simmental Ranch Production Sale
Turtle Lake, ND
- 9 Bata/Olafson Production Sale
Rugby, ND
- 10 Breeding for the Future Production Sale
Napoleon, ND
- 10 Wicks Cattle Co & Spruce Hill Ranch Bull Sale
Ludlow, SD
- 11 Lassle/Skillestad Ranches Annual Production Sale
Glendive, MT
- 12 TNT Simmentals 23rd Annual Genetic Explosion Bull Sale
Almont, ND
- 13 Kenner Simmental Ranch 12th Annual Production Sale
Bismarck, ND
- 13 Ekstrum Simmentals Bull Sale
Kimball, SD
- 14 Rydeen Farms Annual Production Sale
Clearwater, MN
- 14 Nelson Livestock Company Bull Sale
Wibaux, MT
- 15 Dakota Power Bull Sale
Valley City, ND
- 15 Traxinger Simmentals Private Treaty Bull Sale
Claremont, SD
- 16 Keller's Broken Heart Ranch Annual Production Sale
Mandan, ND
- 17 Sys Simmentals Annual Bull Sale
Douglas, ND
- 17 Hieggelke Simmentals Annual Production Sale
Lisbon, ND
- 18 Hoiby Simmentals Annual Production Sale
Rugby, ND

- 18 Bichler Johnson Annual Production Sale
Linton, ND
- 19 Dakota Xpress Simmental Sale
Bismarck, ND
- 20 Ellingson Simmentals Production Sale
Rugby, ND
- 21 Northern Plains Simmental Private Treaty Sale
Bowbells, ND
- 22 Bulls of the Big Sky Bull Sale
Billings, MT
- 23 Larson's XL Simmental Production Sale
Mandan, ND
- 27 Double T Simmentals Private Treaty Bull & Female Sale
Turtle Lake, ND

March 2010

- 2 Doll Ranch Annual Production Sale
Mandan, ND
- 5 LaBatte Simmentals 30th Annual Production Sale
Moose Jaw, SK
- 6 McMillen Ranching Ltd. Bull Sale
Carievale, SK
- 8 7N Simmental Ranch Annual Production Sale
Medina, ND
- 11 Spring Creek Simmentals Production Sale
Moosomin, SK
- 12 Meyer's Ranch "Think Black" Production Sale
Mandan, ND
- 13 Northwest North Dakota Select Simmental Sale
Stanley, ND
- 15 Genetic Source Bull & Female Sale
Brandon, MB
- 25 Wheatland Cattle Co 6th Annual Bull Sale
Alameda, SK

April 2010

- 2 Edge of the West Bull Sale
Mandan, ND
- 3 Tri E Simmentals Bull Sale
Clifford, ND

Check out the website at www.northdakotasimmental.com

North Dakota Simmental Association 2009 Annual Meeting

The North Dakota Simmental Association annual meeting was held at Farmers Livestock Auction, Bismarck, Friday, December 18, 2009.

President Pat Thorson called the meeting to order and welcomed the membership. Pat introduced the North Dakota Simmental Association board of directors. Pat recognized ASA trustees, Roger Finke and Kevin Thompson, ASA field representative, Kelly Schmidt, Simmental Scene editor, Todd Finke, sale manager, Jeff Thomas, and sale consultant, Jim Suver.

Bob Grant passed out copies of the 2008 annual meeting and the current financial report. Motion by Jerry Hanson, second by Kevin Elliot to accept the minutes as presented. Carried.

Bob presented the fiscal 2009 financial report with 2008 comparison. As of 11/30/09: Check book balance --- \$923.33; Certificates of Deposit --- \$8,842.56; to give a cash net worth of \$9,765.89. Motion by Kevin Elliot, second by Mike Johnson to accept the financial report. Carried.

Todd Finke gave the *Simmental Scene* report. He gave an issue by issue financial report and the number of mailings.

Kelly Hanson gave the Jr Simmental Association report. He thanked all the producers that helped out at the Regional Classic. List of sponsors was listed on the door. Kelly commented on the Futurity – 1st Wacey Dahl; 2nd Justin Hanson; 3rd Lindsey Sys.

NDSA sponsored events: Greg Myers commented on the North Star Classic. Luke Keller and Kevin Elliot talked on the feeder calf sales at Kist and Napoleon Livestock Auction. Buckshot commented on the State Fair picnic.

Election of directors: Patrick Thorson – SE; Bob Gannaway – NW; Doug Bichler -- SV. Bill Begger made a motion to pass a unanimous ballot for the three, seconded by Tim Clark. Carried.

Kelly Schmidt ASA field representative visited with the membership. Kevin Thompson, ASA Trustee, gave some remarks. Bring any problems or concerns to Kevin or Roger.

Luke Keller visited about the new field investigator position for the North Dakota Board of Animal Health. Curtis Olafson added some comments.

Jeff Thomas commented on the cattle in the sale.


Tracey Koester, owner of Cow Camp Productions, and Erika Kenner, EK Photography, put on a workshop with lots of tips on advertising and taking good photographs to promote your ranch.

Submitted by Bob Grant


HAVE YOUR BULL SALE REPORT POSTED ONLINE AT

WWW.NORTHDAKOTASIMMENTAL.COM


Email your report to
todd@edje.com



Selling at the
**NORTHWEST NORTH DAKOTA
SELECT SIMMENTAL SALE**
Saturday, March 13, 2010
1 pm CST, Stanley Community Building, Stanley, ND



ROCKY HILLS WINTER WPK5
Rocky Hills Royalty R6 X Rocky Hills Levi
(Hairs Blk Casino)



ROCKY HILLS DREAM GIRL WRK9
Vision X Dream On

Also selling:

ROCKY HILLS ROUTE 1 <i>WLES X WLE Overload</i>	ROCKY HILLS W468P <i>Wheatland 468P x Triple C Made Right</i>
--	---

ROCKY HILLS RANCH
Merrill & Jennie Knoshaug
5132 131st Ave NW
Williston, ND 58801
701-572-3503

*You can see these and more
at the Ranch. 5 miles east
of Williston.*

RUST MOUNTAIN VIEW RANCH

PRIVATE TREATY BULLS AND HEIFERS AVAILABLE FOR SALE

View these sample embryo matings
ALSO FOR SALE



TNT Miss Sadie M68

#2183899 • BD: 03.11.2002 • SIMM

SRS FORTUNE 500

Sire: **TNT IMPACT H21**

TNT MISS 600U F86

DX PREFERRED ZIMA

Dam: **TNT MISS JADEN J318**

TNT MISS BL JACK E178

While M68 was at TNT Simmentals of Almont, ND she averaged \$8,500 on 15 bulls. She is the Dam of TNT Top Gun R244 and one of the breeds most influential, massive, and broody cows to date.

Mr NLC Upgrade U8676

#2474338 • BD: 03.05.2008

NICHOLS LEGACY G151

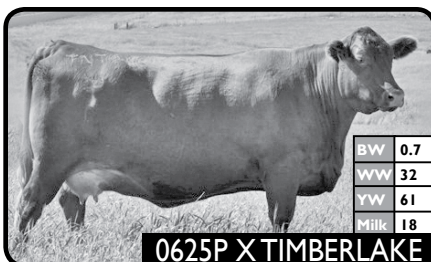
Sire: **ELLINGSON LEGACY M229**

ELLINGSON MS PSTOCK K58

GLS MOJO M38

Dam: **MS NLC MOJO S6119 B**

GFI DARLA M410



Peltons Miss Barb 0625P

#1024366 • BD: 09.01.2004 • ANGUS

BECKTON JULIAN GG B571

Sire: **BROWN VACATION H7106**

LCHMN FLOWER C1161

LMAN KING ROB 8621

Dam: **PELTONS ROBI 9001J**

DORIS 759

625P is a demonstrator of great pedigree combinations. She has stacked genetics generations deep with a picture perfect disposition and structure that commands your attention.

Red Six Mile Timberlake 180T

#1398763 • BD: 02.21.2007

GLACIER DIVIDE 310

Sire: **RED TOWAW INDEED 104H**

RED TOWAW MOLLY 67C

RED SHODEREE MARIAS 64H

Dam: **RED SHODEREE ECHETA 193N**

RED SHODEREE ECHETA 6J



MR. NLC SUPERIOR 6018



GCF MR AMIGO



TNT GUNNER N208



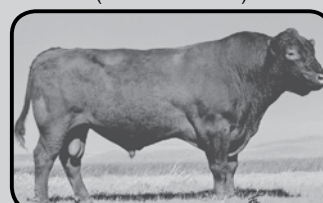
LIMESTONE DARKHORSE U322



RED FINE LINE MULBERRY 26P



TNT TOP GUN R244
(SIMMENTAL SIRE)



FCC RAMBO 502

Most Embryos Available Are Exportable

"Ace In The Hole"
PRODUCTION SALE
Spring 2012



Simmental • Red Angus • Salers | Mercer, North Dakota



Josh & Trista Rust
435 3rd Ave West
Turtle Lake, ND 58575
Ph & Fax: 701-448-2089
Cell: 701-391-9769
rustmountainviewranch@hotmail.com

John EL & Annette Rust
836 7th Ave NW
Mercer ND 58559
Cell: 701-400-1653
Home: 701-447-2667

Jesse & Amy Rust
Cell: 701-391-8228

www.rustmountainviewranch.com

*Red & Black
Simmental
& Red Angus*

7N SIMMENTAL RANCH

*"Representing Over 40 Years of Genetic Selection for the
Total Package of Superior Qualities in Beef Cattle Usefulness"*

Join us for our 31st Production Sale

Annual Production Sale

MARCH 8, 2010

At the ranch • 11 miles SW of Medina, ND • 1:00 pm



BLACK SIMMENTAL



RED ANGUS



RED SIMANGUS



RED SIMMENTAL

Offering

*75 Yearling Bulls &
15 Coming 2-Year-Old Bulls &
50 Heifers on Sale Day!*

SIMMENTAL SIRES:

Body Builder • Magnum
7N Beefbuilder • TNT Gunner

RED ANGUS SIRES:

Forster High Beam • Forster Cannon
Forster Canyon

- Bull Keep & Delivery Available
- Bulls will be Semen Tested before Delivery
- Carcass & Performance Data Available

Arlyn & Sourey Schmidt

4850 41st Street SE, Medina, ND 58467
arlyn@7nsimmentalranch.com
701-486-3420 • Visitors welcome!

7N SIMMENTAL RANCH

Visit our Website: www.7nsimmentalranch.com

Doug Schmidt • 701-269-9321
doug@7nsimmentalranch.com

MRL ^{16th Annual} Bull Sale

Saturday, March 6, 2010
At the Ranch • Carievale, Sask
(just 18 miles North of Sherwood, ND)

140 Bulls Sell

- 50 Polled Red Simmental Bulls
- 30 Polled Black Simmental Bulls
- 15 Fullblood Fleckvieh Simmental Bulls
- 15 SimAngus Bulls
- 30 Registered Red & Black Angus Bulls

The Commercial Cattleman's "One Stop Bull Shop"

For Elite Simmental & Red Angus Genetics

At MRL we have built a reputation around supplying Thick Beef Bulls to Commercial Cattlemen and standing behind them. Herdbulls packed full of economic and convenience traits that will accelerate your breeding program. Managing over 500 mother cows with limited manpower, these bulls are raised under ranch conditions similar to yours, and are developed on a silage-based ration to ensure soundness and longevity. Over 30 years of genetic selection with the commercial cattleman in mind: calving ease, consistency, natural thickness, maternal values and carcass traits bred right in. Give us a call, we would enjoy visiting about your operation and herdbull needs.

Free Delivery

Come in your car?

We'll drop the bulls off in your yard.

Semen Tested and 100% Guaranteed

Every bull is semen tested satisfactory before the sale. No surprises on bulls that don't work after the bull sales are over.

Affordable

Take advantage of the Exchange Rates!

Thank You

to our U.S. Buyers in '08 & '09. Almost 25% of our bulls sold to some of the Top Breeders & Commercial Cattlemen in the Dakotas the last two years. We have the experience and documentation to get your bulls to your yard hassle free.

Call today for a sale catalogue,
bull video or more information!

"Representing 100 Simmental Bulls"



35W

MRL Hurricane x Fully Charged
15 Powerfull Hurricane sons sell



100W

Beefmaker x Fortune 500
2 E.T. Brothers



164W

MRL Black Bear X MR Beef
Several performance sons by Black Bear



173W

MRL Turbo x Reality
Calving Ease & Thick



41W

TH Black Edition X Remington Red Label
12 Black Edition sons sell!



46W

TNT Power Surge X Above Par
An Awesome set by Power Surge



155W

10 Fullblood Fleck Bulls



19W

15 SimAngus Bulls
Red & Black



29W

MRLA Stroth 73T x Knight



40W

Mission Statement x Iceberg

The most powerful set of Angus Bulls yet!

McMillen Ranching Ltd.

Box 99 • Carievale, SK

Lee: 306-928-4820 • Dave: 306-928-2249 • Jim: 306-928-4636

Lee Cell: 306-483-8067 • Dave Cell: 306-483-8660 • Jim Cell: 306-483-7986

Fax: 306-928-2143 • Email: mrl@sasktel.net

Spring Creek Simmentals / Red Rose Angus

BULL SALE

March 11, 2010

1:30pm at the ranch Moosomin, SK

Selling approx. 90 Bulls, Red and Black Simmentals,

Red and Black Angus and Simm/Angus

All dams and bulls pictured on our website:
www.springcreeksimmentals.com



MBI 34W

ACCI Hustler x MSR Kansas Tank
Homozygous Polled
Homozygous Black



MBI 145W

Spring Creek Tank x Line Drive
Homozygous Polled
Homozygous Black



MBI 68W

TNT Knock Out x Springcreek Tank 63P
Homozygous Polled
Homozygous Black



MBI 52W

TNT Gunner x Spring Creek Tank
Homozygous Polled



MBI 57W

ACS Red Rebel x MSR Kansas Tank
Homozygous Polled



MBI 183W

ACS Red Rebel x Spring Creek Tank
Homozygous Polled



RRAR 9W

SAV Final Answer 0035 x Eastondale Fortune 12'98 LCB Lancer 1202S x Red Soder Canyon 126M



RRAR 20W

Guest Consignors:

- Black Sand Cattle Co.
- Sun Rise Simmentals



Brian McCarthy and Family

Box 467

Moosomin, SK

SOG 3NO

Phone: 306-435-3590

Cell: 306-435-7527

E-mail: bmccarthy@sasktel.net

www.springcreeksimmentals.com



Spring Creek Simmentals

GENETICS SOURCE

All bulls semen
tested and fully
guaranteed!

BULL & FEMALE SALE

★ Monday, March 15, 2010 ★
Keystone Centre - Brandon, MB

Manitoba's largest selection of Full Fleck Genetics

*50 bulls on offer, Full Fleck, Fullblood, Purebred and Red Factor Genetics. Polled and Horned.
Also registered females and packages of commercial heifers.*



Red Baron x MFL Country (Polled)



Evolution x Houston (Polled)



Super Hero x Extraordinaire (Polled)

For more information, please contact:
Matthew or Brad Smith (204) 526-7423 or
(204) 723-0254 (Big Sky)

Todd & Danna Collins (204) 823-1434 (Oakview)
Darryl & Marnie Marcischuk (204) 867-0132 (Big Hills)
or Transcon Livestock Services



email: transcon@transconlivestock.com
www.transconlivestock.com

Transcon Livestock
Corp.

403/938-6800 Fax: 403/206-7786
Box 700, Okotoks, AB T1S 1A8
JG cell: 403/556-5563 BW cell: 403/540-3084

BJ cell: 403/863-0209 JW cell: 403/540-3084 JB cell: 204/750-2351

Northwest North Dakota Select Simmental Group

28th Annual Sale
Saturday March 13, 2010
Community Building - Stanley, ND

Selling
80+ Lots



BD: 2/1/09 BW: 82
EPDs: 8 1 44 78 2 3 25



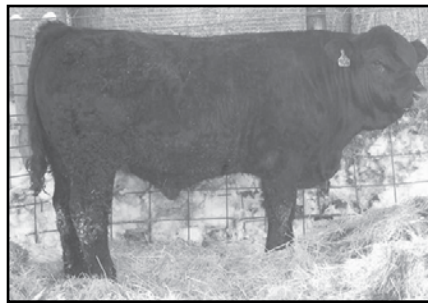
BD: 1/24/09 BW: 82
EPDs: 10 1 35 68 2 5 23

For more information contact:

Gary Sys (President) 701-722-3244 • Bob Grant (Secretary/Treasure) 701-453-3218 • Bob & Karen Brandvold (Marketing) 701-228-2473



ALSR Preference W901



ALSR Crusader W906

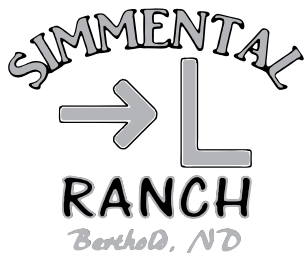


ALSR Sneak Attack W912

ARROW L SIMMENTAL RANCH

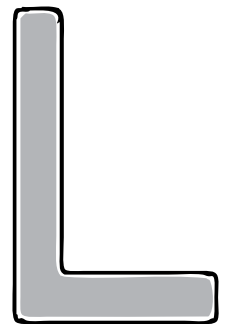
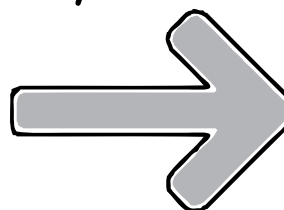
Consignments to the NW ND Select Simmental Sale

March 13, 2010 • Stanley, ND



ARROW L SIMMENTAL RANCH

Mason Lautenschlager
424 Moore Ave
Berthold, ND 58718
(701)-509-3251
mason.lautenschlager.2@ndsu.edu



KLINE SIMMENTAL RANCH



Thanks to Deckert Simmental Ranch of Arena for the opportunity to purchase cattle in their dispersion sale in September. Your efforts and dedication to the Simmental breed are appreciated not only by us, but by cattle producers throughout the country. We look forward to calving season and building a herd that will continue to produce Quality Performance Genetics for years to come. Thank you and congratulations on a successful sale!



We look forward to building lasting relationships with fellow cattlemen and women.

2010 Private Treaty Bull Sale:

17 Simmental & SimAngus yearling bulls

Sired by: MSR Black Velvet 5164
TNT Gunner • Ellingson Legacy
WS Beef Maker • Ranch Hand
GCF/Zeis MR Commandero

Bulls will be available for sale Feb. 20. • We will feed bulls for free until April 30.
Bulls are bred for performance, maternal value, and calving-ease. • They are priced affordably.

60 fancy Simmental & SimAngus commercial bred heifers

Black and Red • Due February 23
AI'd to: New Design 878 • Dikemans Sure Bet
Excellent set of top-notch females!

Bulls and heifers are available to view any time.
We guarantee they will make a difference on your bottomline.

Please call or e-mail to request a catalog and be placed on our mailing list.

Located 5 miles west of Hursdfield

Matt & Emily

701.693.6317

klscows@daktel.com

Central ND ABS sales rep.

Monty, Terri & Kyle

701.693.6806

mtkline@daktel.com

Larson XL Simm/Angus

Selling quality cattle for over 40 years!



- ◆ Feeding arrangements available
- ◆ Deduct \$50 if you haul your bull home on sale day
- ◆ Free delivery in Dakotas
- ◆ 5% discount on 3 or more bulls
- ◆ 40 years performance testing Simmental cattle
- ◆ Ultrasound tested
- ◆ Satisfaction guaranteed

XL 911 BC Marathon * PPSR Nophalt
Black, Simm/Angus 12/4/09 wt: 1115
0.85 32 64.1 # 12 27.7

32nd ANNUAL BULL SALE ♦ TUESDAY, FEB. 23

1:30 PM ♦ KIST LIVESTOCK, MANDAN, ND

Selling 50 Simm/Angus Bulls & 10 Bred Heifers

BILL & COLLEEN LARSON ♦ TODD & JUDY LARSON

2406 8th Ave. NE ♦ Lemmon, South Dakota 57638 ♦ (701) 376-5360

www.xlsimmental.com

HAVE YOUR BULL SALE REPORT POSTED ONLINE AT

WWW.NORTHDAKOTASIMMENTAL.COM

*Email your report to
todd@edje.com*

Double T Simmentals

Private Treaty Sale

Feb. 27, 2010

At the Ranch • Turtle Lake, ND

Offering **25 bulls &
25 open females**



HSF Majority X TNT Firestone



WS Beefmaker X TNT Firestone



GW Lucky Man X Dream On



Shearforce X KS Dexter



Wheatland 680S X KS Dexter

Tim & Tam Clark

1999B 18th St. NW • Turtle Lake, ND 58575

701-448-2815 • www.blacktiecattle.com

Simmental

Tri E Simmentals

Efficiency, Conversion & Carcass. . .

Raising 'em Right for the Industry.

We have been buying calves back from our bull customers for decades. Let us know when you take calves sired by our bulls to the sale barn, you can be assured that we will be there to make sure they bring top dollar.

***Join us for our bidding day, the first Saturday in April,
and add the benefits of a Tri E Simmental bull to your herd.***

Offering by these AI Sires:

TriE S623 • SRF Legacy 5R • TNT Gunner • Red Quorum • Shear Force •
Lucky Dice • Beefmaker • Lucky Man

For information or to be added to our mailing list,

E-mail: triesimmentals@hotmail.com

or call:

Tri E Simmentals

Mike and Patty Elliott
701-488-2712

Kevin Elliott
701-289-0165

Kurt Elliott
701-430-1101

197 147th Avenue SE, Clifford, ND 58016

www.triesimmentals.com



Raising Charolais since 1958 and Simmental since 1968
Doll Charolais & Simmental Ranch

30th Annual Production Sale • Selling the Best of Two Breeds
Tuesday, March 2, 2010 • 1:30 pm CST • Kist Livestock • Mandan, ND

Feeding and Delivery Available



DCR Mr Cinch W97 PLD

BW: 86 • BD: 2-21-09 • Adj. WW: 855 • WW Ratio: 107
 365 WT: 1510 • RATIO: 108

Sire: IPU Black Cinch 125T • Dam: DCR Ms Rib S347
 Black Powerful son out of 125T. Good length

CE	BW	WW	YW	MCE	MM	MWW	STAY	CW	YG	MRB	BF	REA
9	1.2	42	84	3	9	30	18	15	0.07	0.11	0.03	0.22



DCR Mr Wide Cinch W128 PLD

BW: 90 • BD: 2-28-09 • Adj. WW: 896 • WW Ratio: 112
 365 WT: 1458 • RATIO: 101

Sire: IPU Black Cinch 125T • Dam: DCR Ms Nugget S169
 125T son. Deep bodied, length and muscle. Herd Sire!

CE	BW	WW	YW	MCE	MM	MWW	STAY	CW	YG	MRB	BF	REA
10	1.5	48	80	2.4	5	30	21	13	0.08	0.06	0.02	0.08



DCR Mr Beef Maker W236 PLD

BW: 88 • BD: 3-13-09 • Adj. WW: 878 • WW Ratio: 110
 365 WT: 1523 • RATIO: 109

Sire: WS Beef Maker R13 • Dam: DCR Ms Nugget R39
 Good Beef Maker son, that has it all.

CE	BW	WW	YW	MCE	MM	MWW	STAY	CW	YG	MRB	BF	REA
9	1	54	87	-1.1	7.2	34	21	14	-0.05	0.16	0.00	0.34



DCR Mr Red Clover W296 PLD

BW: 96 • BD: 3-19-09 • Adj. WW: 888 • WW Ratio: 111
 365 WT: 1534 • RATIO: 109

Sire: Ankonian Red Caesar P17 • Dam: DCR Ms Ribeye P28
 Retaining 1/3 Semen Interest. Herd Sire Plus!

CE	BW	WW	YW	MCE	MM	MWW	STAY	CW	YG	MRB	BF	REA
6	4	53	97	5	9	36	19	26	0.06	0.06	0.03	0.27



JCH Mr Whine Red W69 PLD

BW: 102 • BD: 2-12-09 • Adj. WW: 773 • WW Ratio: 98
 365 WT: 1429 • RATIO: 99

Sire: Circle X Tyrone 127T • Dam: JCH Ms Red Rock S128
 Two generations red. Seven half brothers in the sale.

CE	BWT	WWT	YWT	MLK	MCE	MTNL
-4	3.7	21	34	0	1	11



JCH Mr Willie W49 PLD

BW: 88 • BD: 2-7-09 • Adj. WW: 810 • WW Ratio: 101
 365 WT: 1559 • RATIO: 107

Sire: EC Grid Lock 604 • Dam: JCH Ms Bull Dozer T108
 Good thick made calf out of a first calf heifer

CE	BWT	WWT	YWT	MLK	MCE	MTWL
6	1.3	31	56	14	8	30

DOLL RANCH

80 Spring Charolais Bulls
 Avg 205 WT: 815 lbs

7 Red Factor Bulls

8 Fall Charolais Bulls
 Avg 205 WT: 744 lbs
 All sired by one Sire

40 Spring Simmental Bulls
 Avg 205 WT: 835 lbs
 Half Red; Half Black

**Open Heifers From Top
 Of The Replacement Pen**
 6 Charolais
 6 Simmental

Volume Discount

**Carcass data and all
 other performances
 will be available
 at sale time**

**Doll Charolais &
 Simmental Ranch**
 3991 36th Street
 New Salem, ND

Charles & Pam
 701-843-8673
 dollboyz@westriv.com

Harlan & Jodie
 701-843-8771

David & Donna
 701-843-7947
 dollfarm@westriv.com

Joe & Helen Doll



EDGE *of the* WEST Bull Sale

April 2, 2010 • 1:00 pm CST
Kist Livestock • Mandan, ND

Selling 75 Powerful Simmental & SimAngus Bulls!



370W

Sire: Hooks Shear Force
Homozygous Polled Herd Bulls will sell!



2K

Sire: SV Northwest Figure
Selling many stout, big bodied bulls!



39W

Sire: SRF Powercat 501T
Many Outcross Red & Black Bulls will sell!



6ET

Sire: KS Red By Design
A Powerful set of Herd Bulls!



W03M

Sire: SRS Preferred Beef
A tremendous group of SimAngus Herd Bulls!



418

Sire: SRS Preferred Beef
Many thickmade SimAngus will sell!

Bulls will be Semen Tested by Sale Day! DNA Test Results Will Be Available!

Check out our website for updated information: www.cattlesalepage.com/edgeofthewest

For more information...

Kaelberer Ranch
Claye & Michelle Kaelberer Family
701-843-8342

KnH Simmentals
Kent & Heather Neshem Family
701-453-3570

SRF Simmentals
Todd & Kelly Finke
701-453-3105

Thomas Brothers
Jeff Thomas • 406-581-8859
Tim Thomas • 701-266-5688